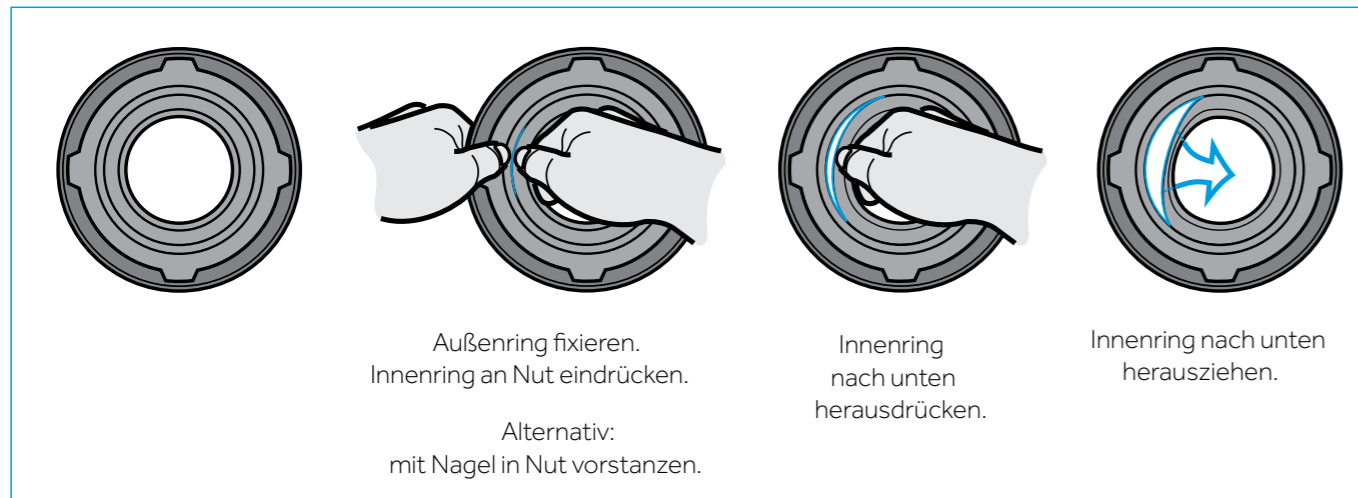
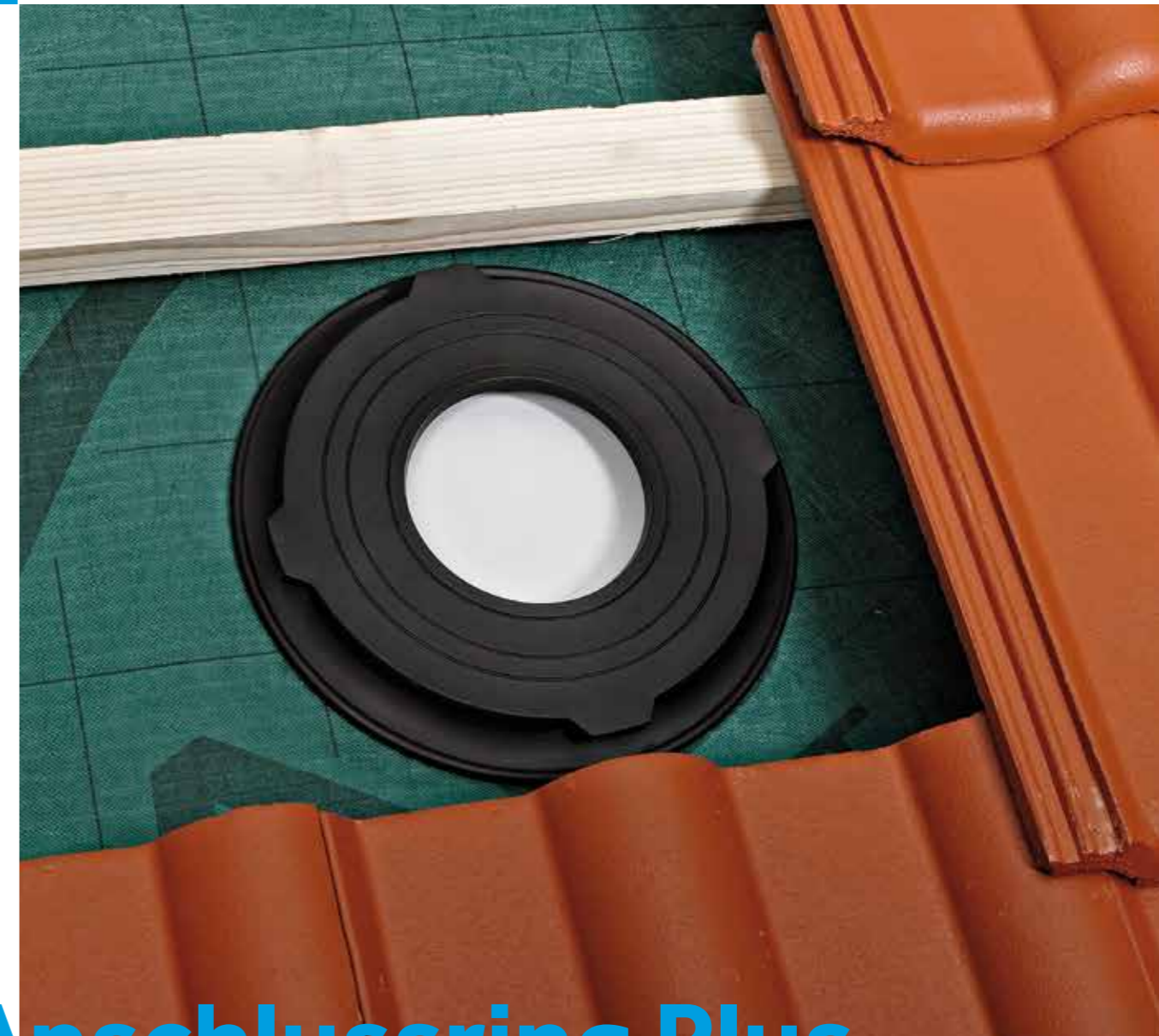
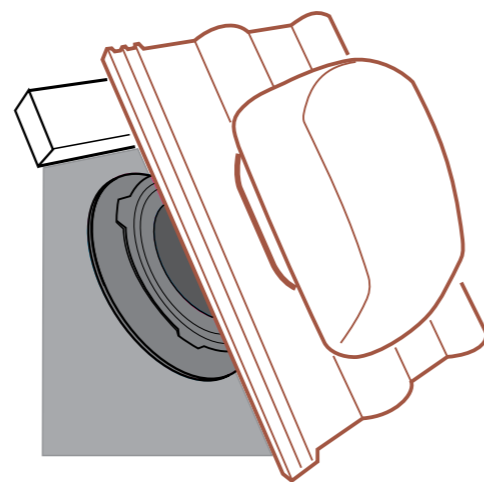
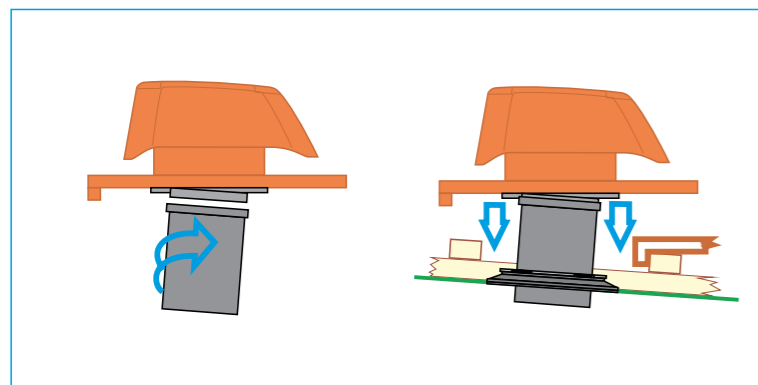
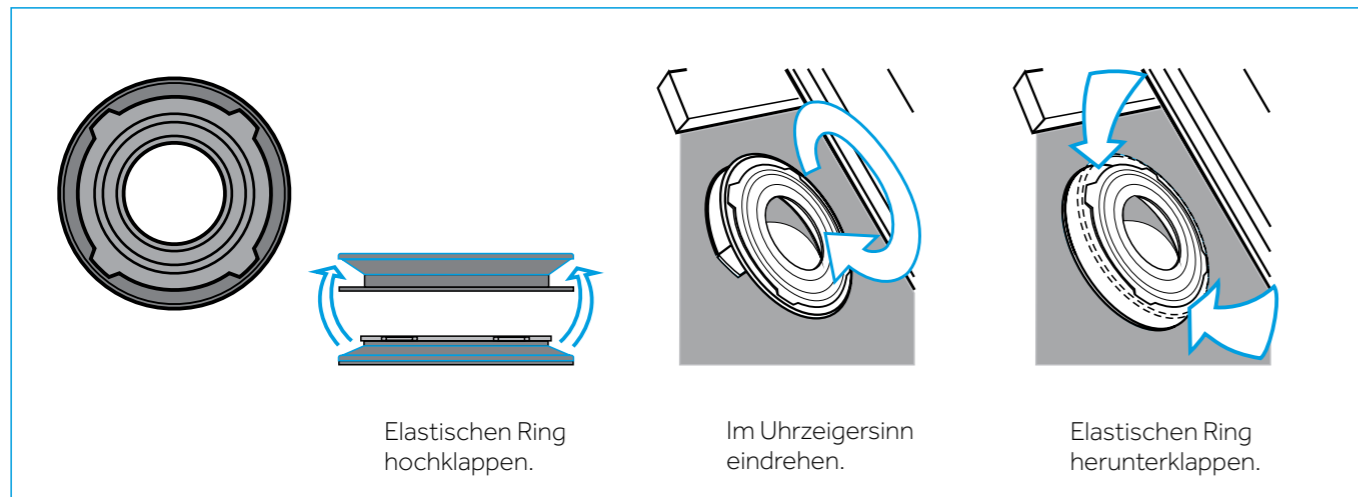


Anschlussring Plus

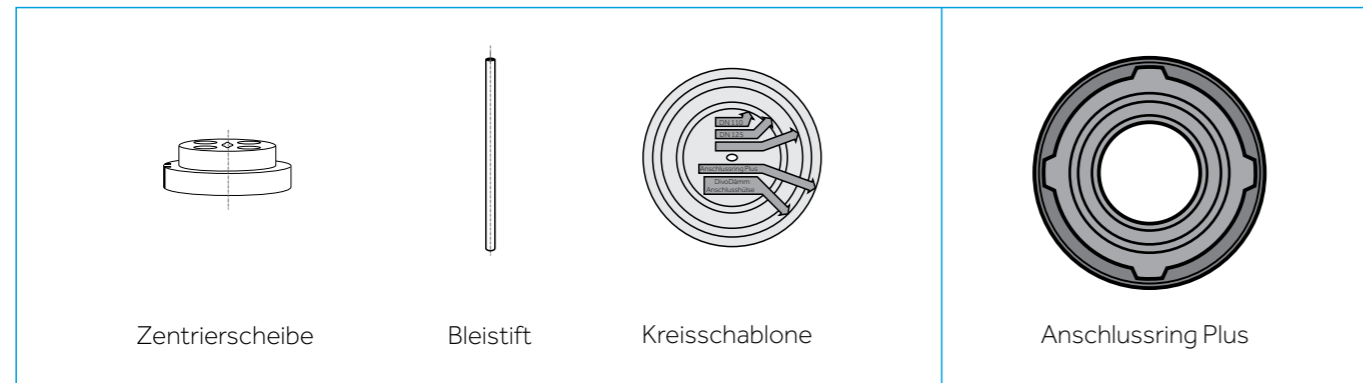


Einsetzen Anschlussring Plus

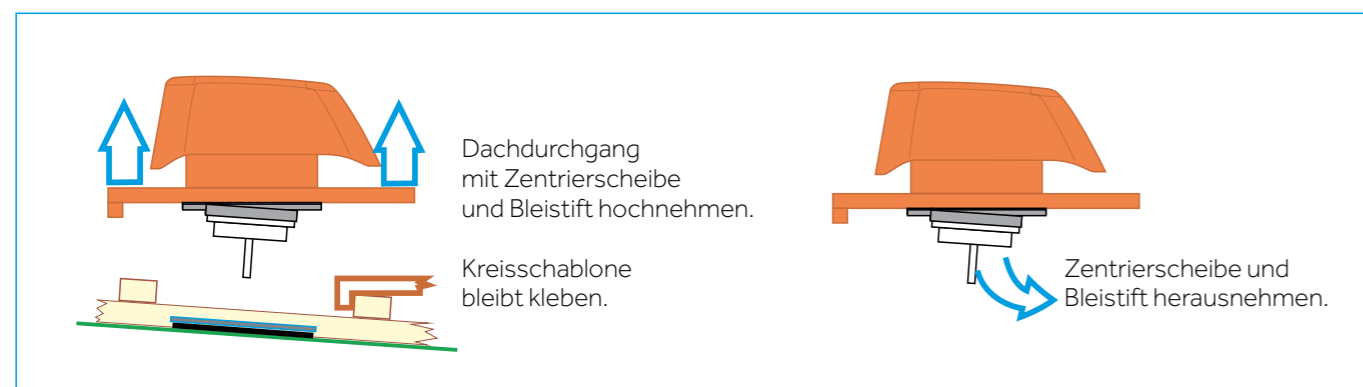
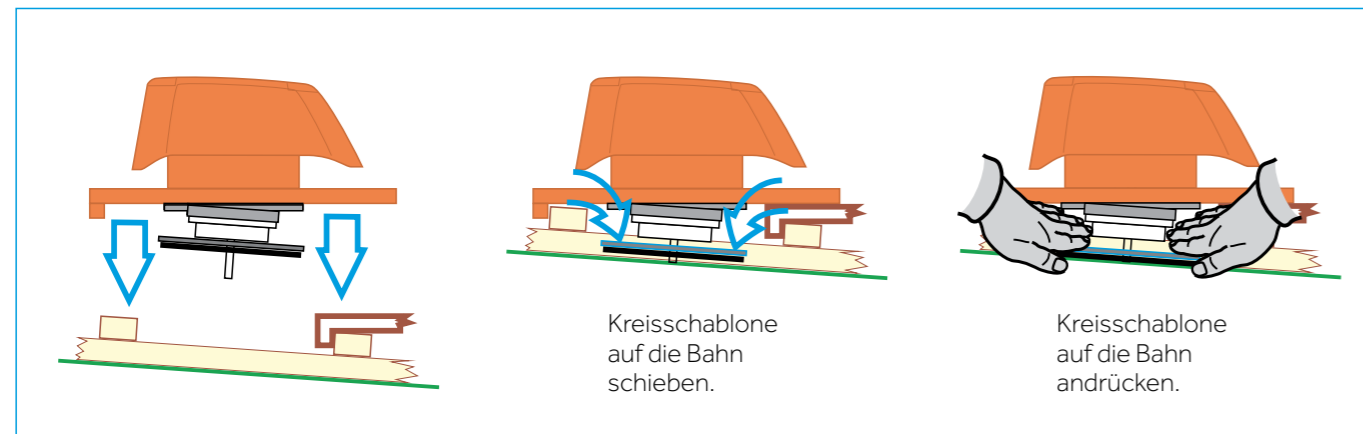
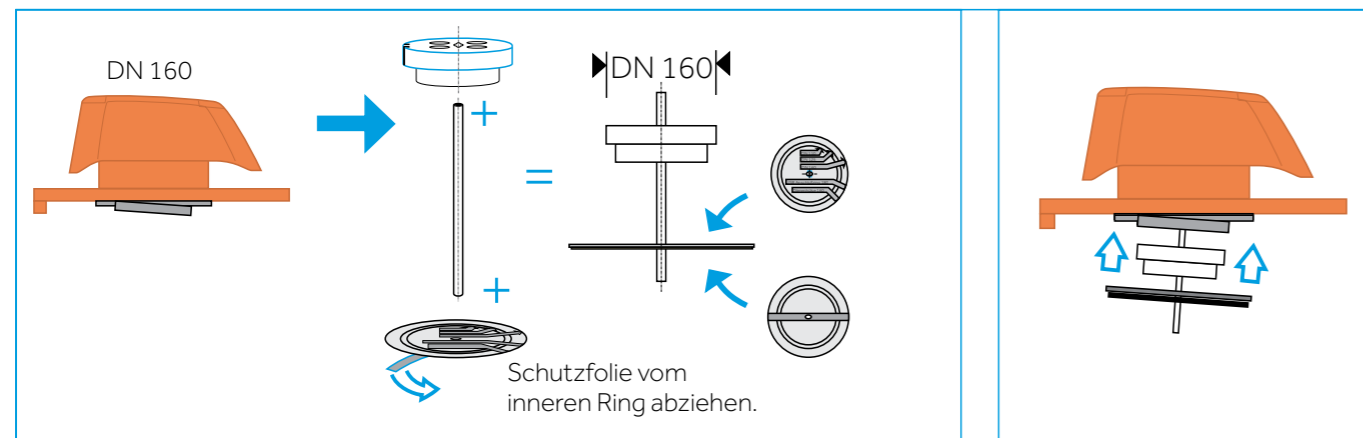


Anschlussring Plus

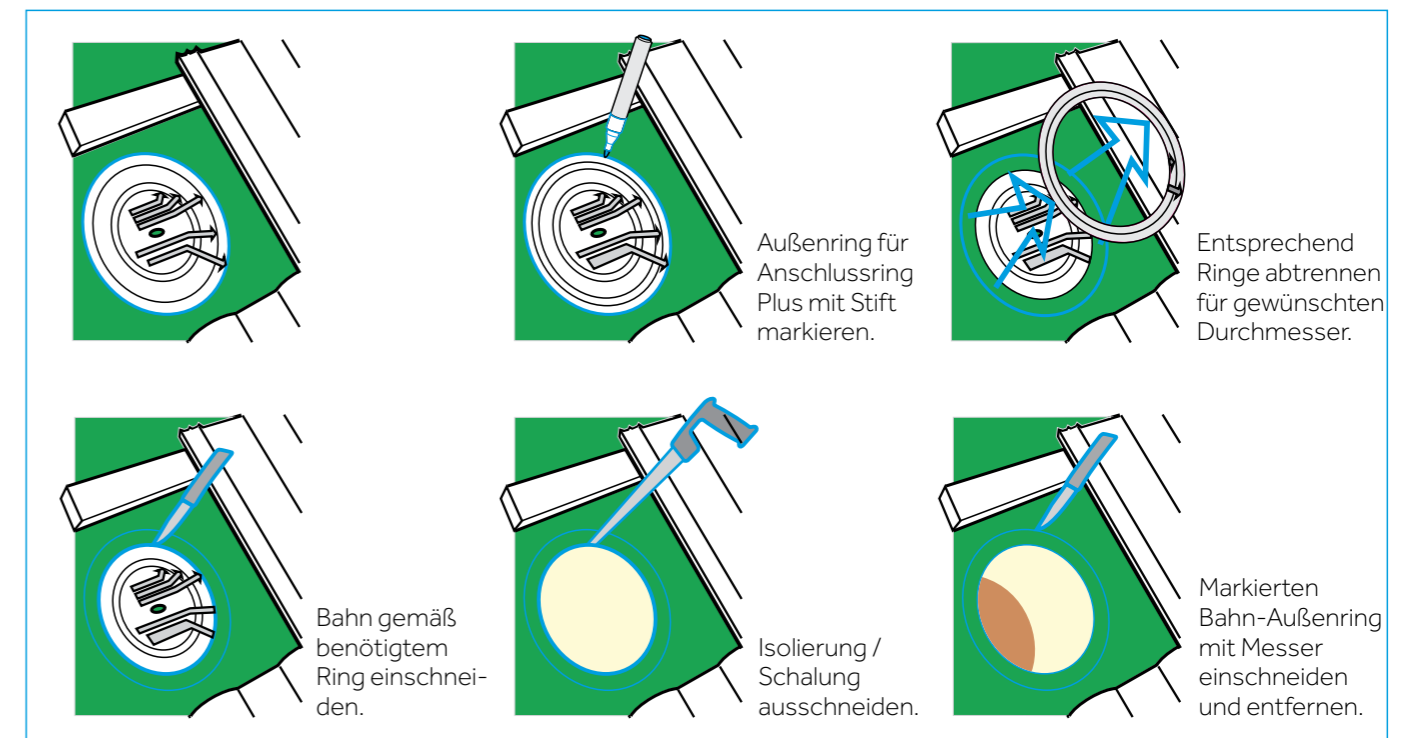
Übersicht - Teile



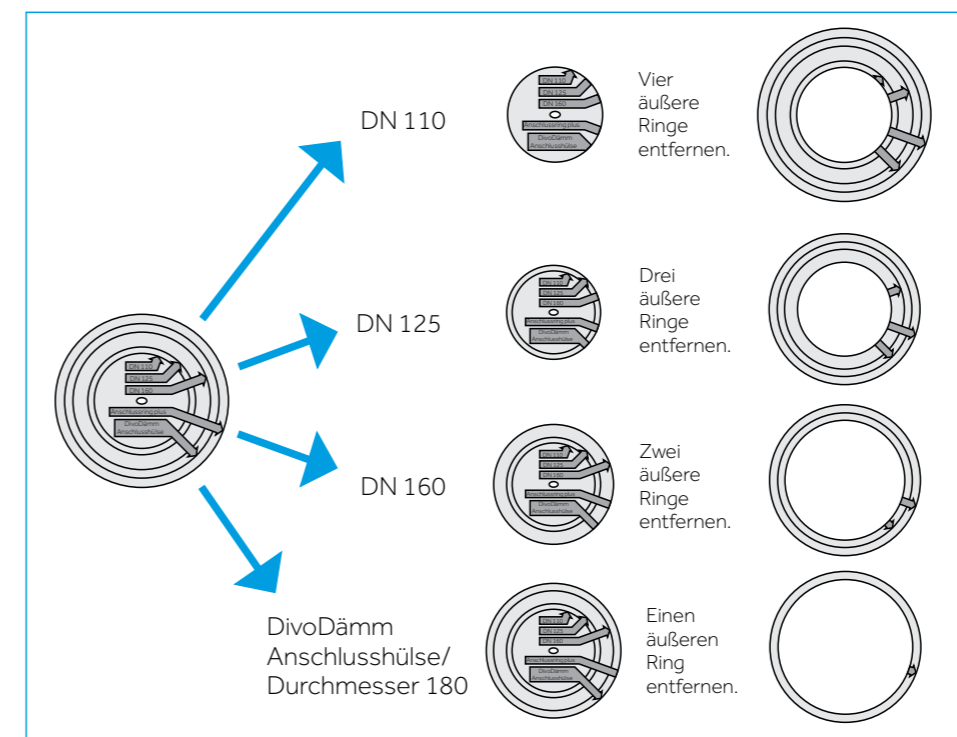
Positionierung der Schablone



Ausschneiden Loch für Bahn und Unterkonstruktion



Kreisschablone



Dachdurchgänge siehe Braas Verlegeanleitung auf www.braas.de.

Anschlussring Plus

